



Little Pocket Pal Collection **COLLECTION**

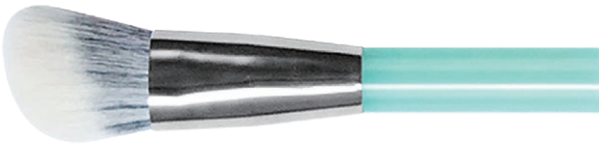




Powder Brush

Product Features: Powder Brush Bulb-shaped brush design brush is rounded and shaped. The brush surface has a large layer and can be taken from multiple angles. The fluffy brush head has a huge amount of hair and thick hair, and the excellent powder grip can quickly fix the makeup for the whole face.

Handle:	Plastic Handle
Ferrule:	Aluminum
Hair:	Animal Structure imitated Synthetic Hair
Total:	127mm
Ferrule Length:	40mm
Handle Length:	45mm



Contour brush

Product Features: Contouring Brush, Professional beveled brush shape that conforms to the contours and feels comfortable to the touch. It can be used for contouring. You can use it to apply makeup lightly and delicately for a natural look.

Handle:	Plastic Handle
Ferrule:	Aluminum
Hair:	Animal Structure imitated Synthetic Hair
Total:	120mm
Hair Length:	40mm
Hair Width:	45mm



Medium Eyeshadow Brush

Product Features: Rounded Eyeshadow Brush, The hair is made of squirrel hair, soft, creamy and elastic. Round head design, the curved brush head fits the contour of the eye socket. The brushed face is rich in layers and can be applied quickly and evenly. It is suitable for tint and eyeshadow smudges around the eye sockets.

Handle:	Plastic Handle
Ferrule:	Aluminum
Hair:	Animal Structure imitated Synthetic Hair
Total:	113mm
Hair Length:	40mm
Hair Width:	65mm



Large Eye Shadow Brush

Product Features: The softness of degradable bristles is combined with the toughness and elasticity of wool, making the hair more comfortable. The flat brush design allows a large area for brushing powder. The brushed top can also be used as a local deepening. It is suitable for eyeshadow base and eyeshadow deepening in eye crease.

Handle:	Plastic Handle
Ferrule:	Aluminum
Hair:	Animal Structure imitated Synthetic Hair
Total:	120mm
Hair Length:	40mm
Hair Width:	65mm



brown brush

Product Features: Thin and small, soft and smooth, used to draw eyeliner, eyebrows. The brush head is like a sharp knife point, short and powerful, can be used to draw very smooth lines, and can also be used as an eyebrow brush.

Handle:	Plastic Handle
Ferrule:	Aluminum
Hair:	Animal Structure imitated Synthetic Hair
Total:	111mm
Hair Length:	40mm
Hair Width:	65mm



Lip Brush

Product Features: Dip the brush in lipstick and create outlines on the upper and lower lips. Then proceed to fill in the remaining lip area for a perfect look.

Handle:	Plastic Handle
Ferrule:	Aluminum
Hair:	Animal Structure imitated Synthetic Hair
Total:	114mm
Hair Length:	40mm
Hair Width:	65mm